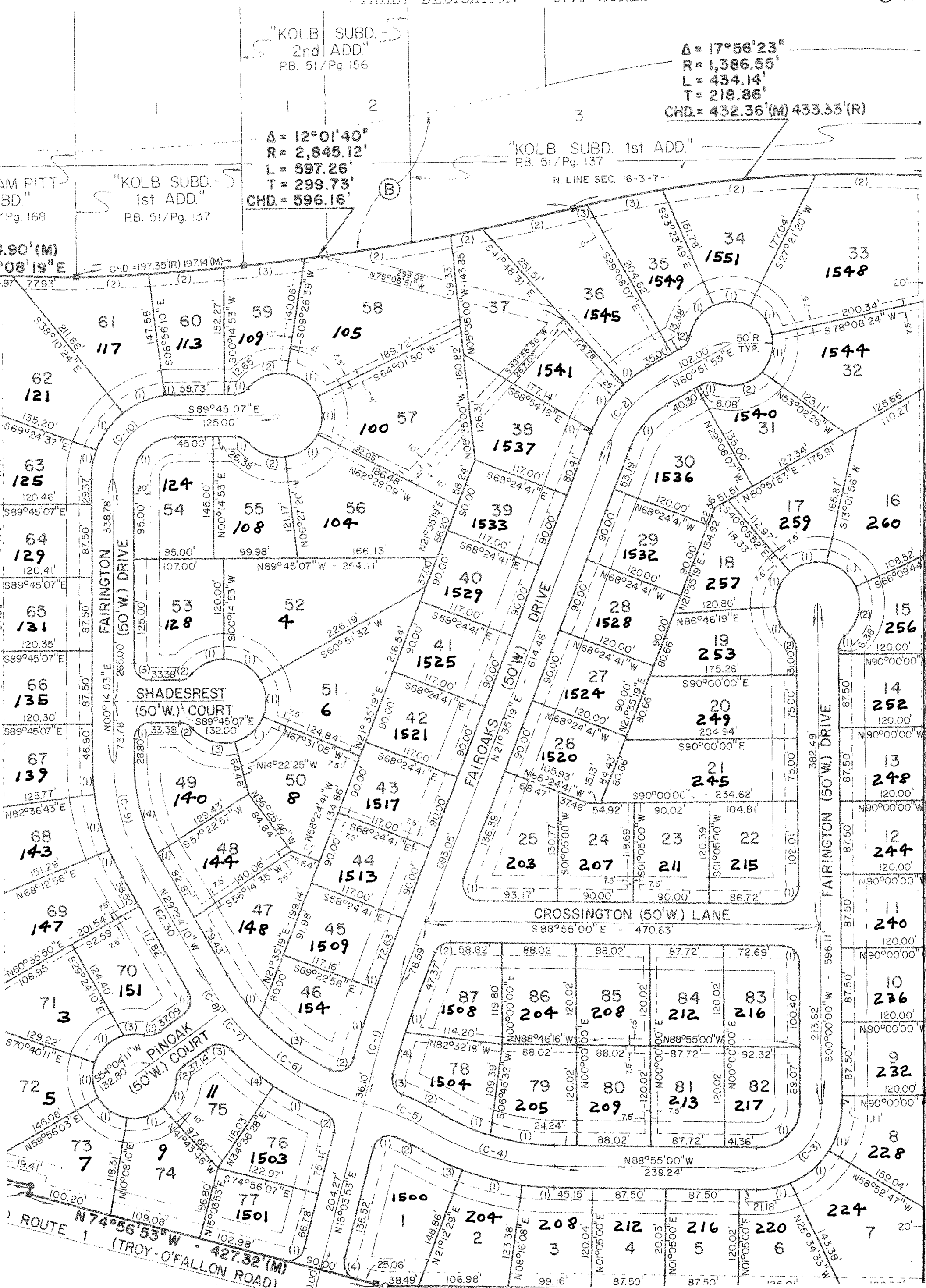


A PART OF THE N.E. 1/4, N.E. 1/4, SEC. 16, T.3N., R.7W., 3RD CITY OF TROY, MADISON COUNTY, ILLINOIS

COVENANTS AND RESTRICTIONS FILED...

TOTAL AREA = 32.10 ACRES
STREET DEDICATION = 5.41 ACRES

For Fer



"KOLB SUBD. 2nd ADD."
PB. 51/Pg. 156

$\Delta = 17^{\circ}56'23''$
 $R = 1,386.55'$
 $L = 434.14'$
 $T = 218.86'$
 $CHD = 432.36'(M) 433.33'(R)$

$\Delta = 12^{\circ}01'40''$
 $R = 2,845.12'$
 $L = 597.26'$
 $T = 299.73'$
 $CHD = 596.16'$

"KOLB SUBD. 1st ADD."
PB. 51/Pg. 137

"KOLB SUBD. 1st ADD."
PB. 51/Pg. 137

"AM PITT BD" PB. 168